

<b>PAGE 2:</b>	BURNER MK 1+2	BU2007 Valve Assembly - Long (Main Burner)
<b>PAGE 3:</b>	BURNER MK 1+2	BU2008 Valve Assembly - Short (Liquid Fire)
<b>PAGE 4:</b>	BURNER MK 1+2	BU2021 Regulator Assembly
<b>PAGE 5:</b>	BURNER MK 1+2	BU2009 Liquid Jet Assembly BU2030 Coil Post Assembly BU8023 Pressure Gauge Assembly
<b>PAGE 6:</b>	BURNER MK 1+2	BU8024 Ignitor Assembly BU2010 Pilot Light Assembly
<b>PAGE 7:</b>	BURNER MK 2	Squeeze Assembly
<b>PAGE 8:</b>	ENVELOPE	Envelope Components & Accessories 1
<b>PAGE 9:</b>	ENVELOPE	Envelope Components & Accessories 2
<b>PAGE 10:</b>	FUEL CYLINDER	Fuel Cylinder General Assembly 1
<b>PAGE 11:</b>	FUEL CYLINDER	Fuel Cylinder General Assembly 2
<b>PAGE 12:</b>	HOSES	Hoses & Fittings
<b>PAGE 13:</b>	FANS	5.5hp / 8.0hp / 13hp Fans

To order please email: [spares@lindstrand.co.uk](mailto:spares@lindstrand.co.uk)

**BU2007 VALVE ASSEMBLY - LONG (Main Burner)**



◀ BU2298 Copper Washer



◀ BU2001 Thin Washer



◀ BU2223 Stem Seal



◀ BU8018 Seat Insert & Carrier



◀ BU2043 Long Valve Bonnet



◀ BU2046 Seat Carrier Sleeve



◀ BU2045 Valve Spring



◀ BU8050 Thrust washer

Specify: A: 2.5mm  
B: 2.8mm  
C: 3.0mm  
D: 3.2mm  
E: 3.5mm  
F: 2.0mm



← BU2041 Valve Stem - Long



◀ BU2222 Stem Seal Quad Ring



BU2040 Valve Handle Pivot



▼ BU2049 Main Burner Valve Handle



▲ BU2114 M4 Grub Screw

**BU2008 VALVE ASSEMBLY - SHORT (Liquid Fire)**



◀ BU2298 Copper Washer



◀ BU2001 Thin Washer



◀ BU2223 Stem Seal



◀ BU8018 Seat Insert & Carrier



◀ BU2051 Short Valve Bonnet



◀ BU2046 Seat Carrier Sleeve



◀ BU2045 Valve Spring



◀ BU8050 Thrust washer

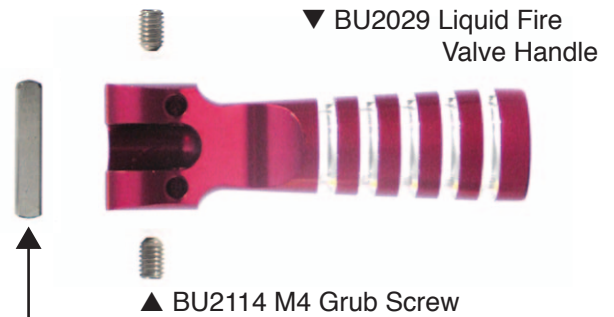
Specify: A: 2.5mm  
B: 2.8mm  
C: 3.0mm  
D: 3.2mm  
E: 3.5mm  
F: 2.0mm



← BU2050 Valve Stem - Short



◀ BU2222 Stem Seal Quad Ring



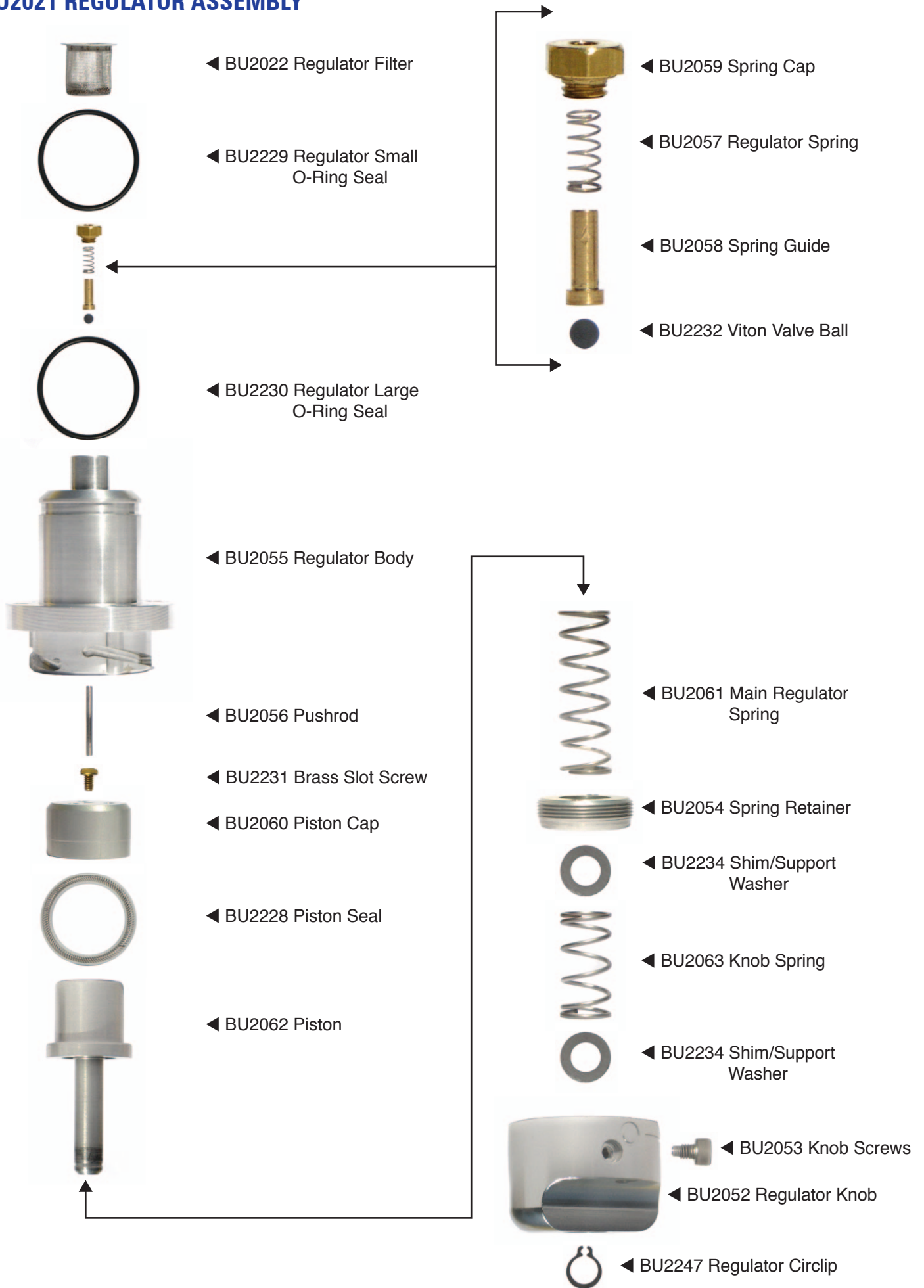
▼ BU2029 Liquid Fire Valve Handle

▲ BU2114 M4 Grub Screw



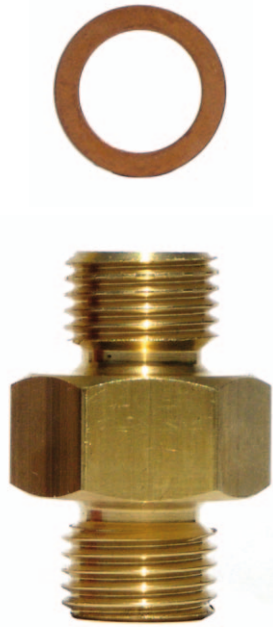
BU2040 Valve Handle Pivot

## BU2021 REGULATOR ASSEMBLY



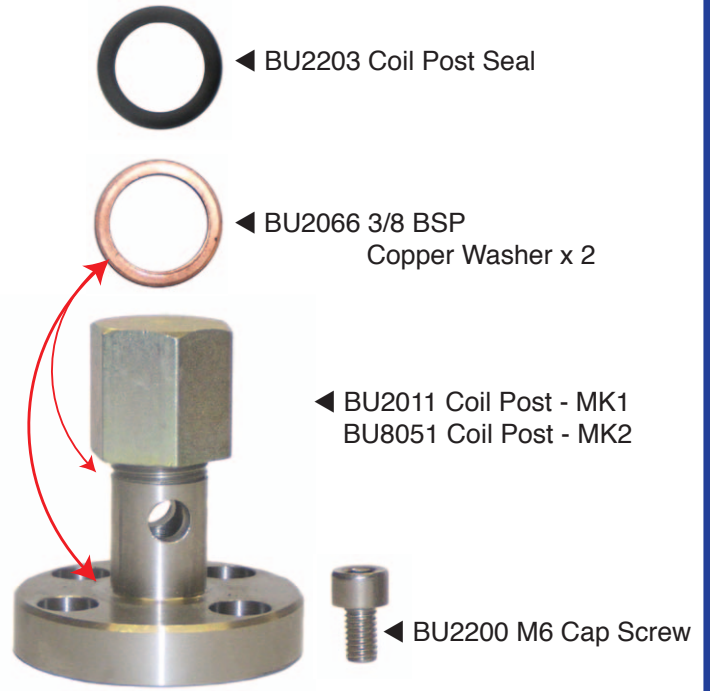
**BU2030 COIL POST ASSEMBLY**

**BU2009 LIQUID JET ASSEMBLY**



◀ BU2084 1/4 BSP  
Copper Washer

◀ BU2064 Liquid Fire Adaptor



◀ BU2203 Coil Post Seal

◀ BU2066 3/8 BSP  
Copper Washer x 2

◀ BU2011 Coil Post - MK1  
BU8051 Coil Post - MK2

◀ BU2200 M6 Cap Screw

**BU8023 PRESSURE GAUGE ASSEMBLY**



◀ BU2084 1/4 BSP  
Copper Washer

◀ BU2067 Liquid Fire Body



◀ BU2024 Pressure Gauge  
Bezel

BU8053 Pressure Gauge ▶



BU2218 Gauge Face Seal

BU2217 Gauge Small Seal



**BU8024 IGNITOR ASSEMBLY**

**BU2010 PILOT LIGHT ASSEMBLY**



◀ BU2079 Bezel Ring



◀ BU2240 Piezo Unit



◀ BU2245 Electrode Boss & Electrode



◀ BU2080 Ceramic Tube & Circlip



◀ BU2078 Ignitor Body



◀ BU2242 O-Ring Seal



◀ BU2076 Pilot Light Cup R/H



◀ BU2087 Pilot Light Cup L/H



◀ BU2069 Pilot Light Stem



◀ BU2037 Pilot Light Jet 0.40



◀ BU2205 Copper Washer



◀ BU2068 Pilot Light Adaptor



◀ BU2250 Pilot Light Filter



◀ BU2084 1/4 BSP Copper Washer



**SQUEEZE ASSEMBLY**



◀ BU8048 Trigger Grip



◀ BU8046 Handle Tube



◀ BU8010 Blast Trigger  
Welded Assembly

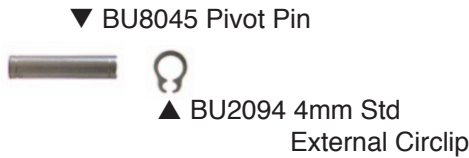


◀ BU2978 M3 x 8 Hex Drive  
CSK S/S Screw



◀ BU2990 S/S Compression  
Spring

◀ BU8074 S/S Spring Cap



▼ BU8045 Pivot Pin

▲ BU2094 4mm Std  
External Circlip



◀ BU8042 Upper Valve Post



◀ BU8043 Lower Valve Post

# ENVELOPE COMPONENTS & ACCESSORIES



◀ EN1838 300.12 Pulley  
Single Block/Internally Bound



◀ EN1839 Pulley 4BSH



◀ AC1166 Quick Links



◀ EN1907 Karabiner 5000kg



◀ EN1910 Karabiner 3500kg



◀ EN1902 50mm Snap Hook



◀ EN1748 Fixed Eye  
Boatsnap Shackle



◀ AC1163 Fusible Link

▼ EN1771 Female Rope Connector



◀ EN1772 Male Rope Connector



◀ EN1773 S/S Sheave Pulley  
(Rotation vents)



◀ EN1901 Rope Stopper  
(Q-Vent)



◀ EN1899 16mm HT Block  
S/S Sheave (Q-Vent)



◀ BA3127 12mm S/S  
Tether Ring



◀ AC1174 9.5mm x 75mm  
S/S Tether Ring



◀ AC1175 6.4mm x 40mm  
S/S Ring



◀ AC1172 5mm x 25mm  
S/S Ring



◀ CH10073 Tether Ring



◀ EN1600 15mm x 3mm  
S/S Ring



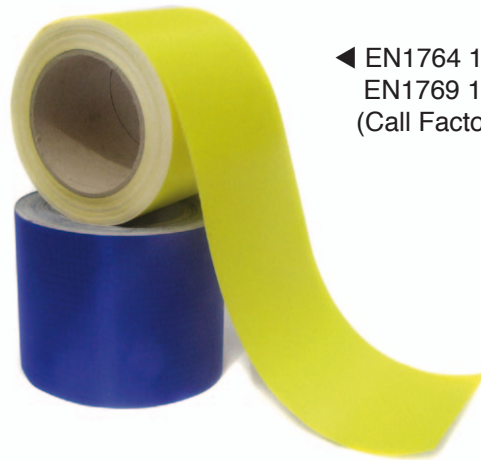
◀ EN1751 Embroidered /  
Woven NO Badges



# ENVELOPE COMPONENTS & ACCESSORIES



◀ EN1746 Printed Parachute Number Labels



◀ EN1764 100mm Repair Tape - Lemon Yellow  
EN1769 100mm Repair Tape - Royal  
(Call Factory for full list of colours)



EN1611 V69 Plaited Thread White



NM20 Nomex Thread White

# FUEL CYLINDER GENERAL ASSEMBLY



◀ CY5176 PRV End Cap



◀ CY5131 Pressure Relief Valve



◀ CY5150 M6 x 70mm S/S Shanked Hex Bolt



◀ CY5146 M6 S/S Washer



◀ CY5117 Worcester Horizontal Block 7/8" UNEF



◀ CY5189 - V40



◀ CY5172 - V30



◀ CY5111 - V20

◀ Liquid Level Gauges (Bleed Valve)



◀ CY5147 M6 x 40mm S/S Shanked Hex Bolt



◀ CY5146 M6 S/S Washer



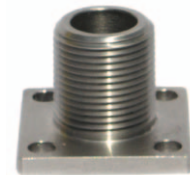
◀ CY5115 Worcester Adaptor Plate 3/8" BSP



◀ CY5112 Worcester Valve & Handle



◀ CY5157 Nupro Bleed Valve (For safe vent)



◀ CY5116 Worcester Adaptor Plate 3/4" NPT

# FUEL CYLINDER GENERAL ASSEMBLY

▼ HS6109 Tema Dust Cap - Male



CY5118 Silicone Grease (100g)  
Not Illustrated

◀ CY5121 Tema 3820 Male Nipple



◀ CY5149 M6 x 25mm S/S Cap Screw



◀ HS6105 Plug in Nipple Tema M13410 (For Nupro)



◀ CY5139 Rochester Gauge Seal



◀ CY5129 Dowty Washer 3/8" BSP



▲ CY5107 Rochester Gauge V20/Worthington



◀ CY5156 Dowty Washer 5/8" BSP



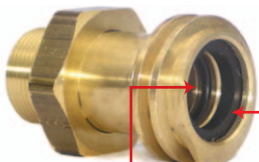
▲ CY5108 Rochester Gauge V30



◀ CY5144 Rego Dust Cap Male



◀ CY5126 Rego 7141 Male Horizontal  
CY5136 Rego 7141 Male Vertical



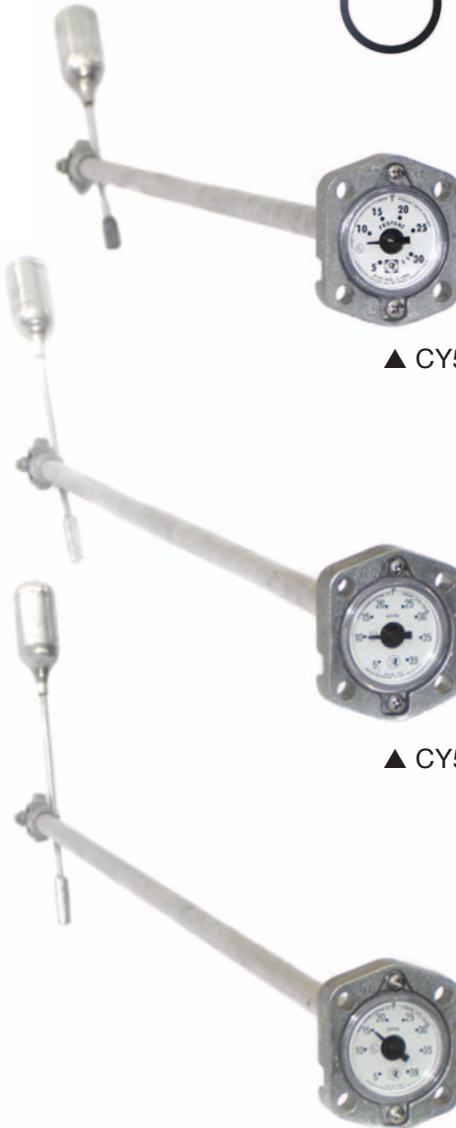
◀ CY5138 Rego Inner Seal



◀ CY5137 Rego Outer Seal (Square)



▲ CY5109 Rochester Gauge V40



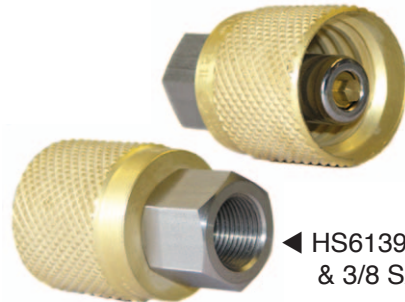
# HOSES & FITTINGS



◀ HS6109 Tema Dust Cap - Male



◀ HS6144 Rego 7141F  
& 1/4 S/S Back Nut

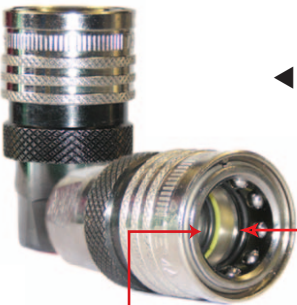


◀ HS6139 Rego 7141F  
& 3/8 S/S Back Nut



◀ HS6112 Vapour Regulator Tema  
1300 Female Body

▼ HS6108 Tema 3810 Dust Cap  
(Female)



◀ HS6113 Liquid Hose Tema 3810  
(Female)



◀ HS6116 Tema Inner Seal

◀ HS6117 Tema Outer Seal



# INFLATION FANS

Please phone for spares information on the following Fans:

5.5hp / 8.0hp / 13.0hp / 3.0hp Cloudhopper / 13.0hp African Spec

